

product specifications for:

# 30A Inlets

**Item #:** 301ELRV.BLK

**Description**  
Inlet, non-metallic locking

**Electrical Specifications**  
30 amperes, 125 volts

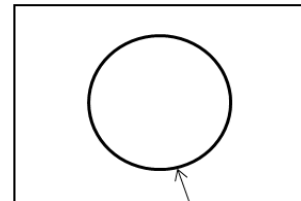
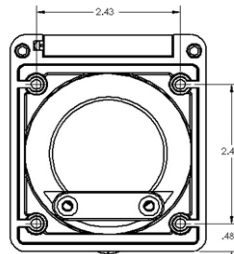
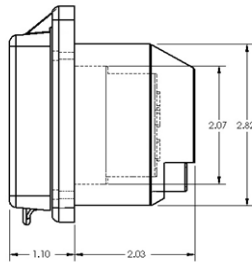
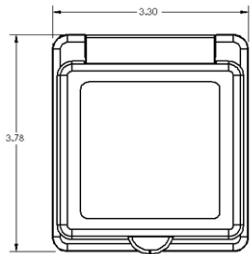
**Material Specifications**  
Cap & Bezel Material: Polyester  
Plug body Material: Nylon  
Contact Material: Brass  
Rear enclosure: Polyester with a UL flammability of 94V-0

**Terminals**  
Brass, Clamp-type. Accommodates 10 AWG and 8 AWG wire.

**Enclosure**  
Provided. Has strain relief.

**Mounting screws**  
Not provided. No. 8 pan head recommended

**Listings**  
UL listed, File E57672  
CSA certified, File 81290\_0\_000  
Complies with ABYC and Coast Guard Standards



2-7/8" (2.875")  
Mounting hole  
diameter